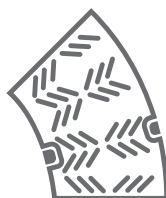
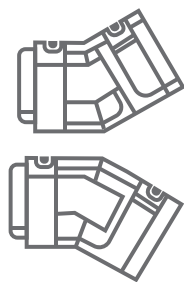
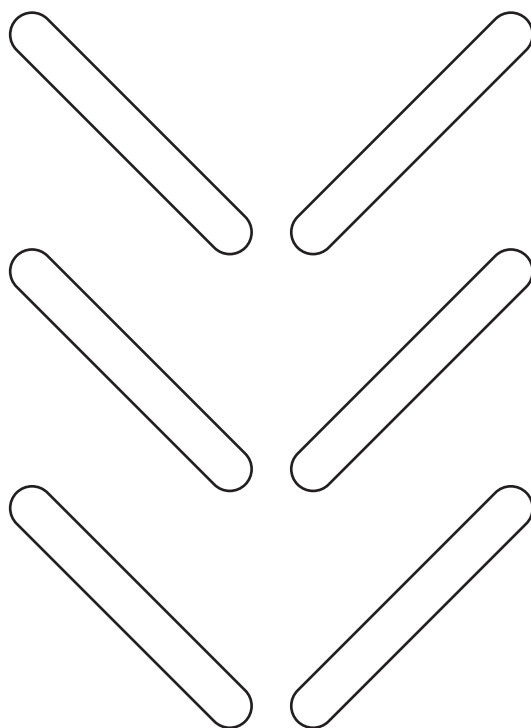


# GREEN TROUGH

INNOVATIVE CABLE ROUTE MANAGEMENT.





RECYCLED

# AN ENVIRONMENTALLY FRIENDLY PRODUCT FROM FURUKAWA ELECTRIC GROUP

4,000 tonnes of recycled household plastic waste was used to make Green Trough in 2017. Equivalent to 268 million average-sized plastic bottles/containers.

# DESIGNED TO BE THE WORLD'S MOST VERSATILE CABLE TROUGH SYSTEM

Furukawa's Green Trough system offers the most innovative, environmentally friendly and state-of-the-art solution to cable route management.

Image courtesy of Trough-Tec Systems



# APPLICATIONS



Road



Rail



Straight



Gradient



45-degree



T-Junction





Energy

Proven quality, durability and flexibility. Green Trough is suitable for many different cable types making it ideal for rail, road and energy applications. Green Trough's strong, lightweight construction together with its versatility significantly reduce the time required to install cable routes.





**LIGHTWEIGHT**



**FLEXIBLE**



**STRONG**



**COST SAVING**



**EASY TO INSTALL**



**WEATHER  
RESISTANT**



**SECURE**



**FLAME  
RESISTANT**





Image courtesy of Trough-Tec Systems



# ADVANTAGES OF GREEN TROUGH



---

## VERSATILE

Straights, bends, gradients and t-junctions all available in an extensive range of sizes, together with accessories and an elevated system.



---

## LIGHTWEIGHT

Approximately 70% lighter on average than conventional concrete alternatives. Green Trough can be installed by human power and is compliant with manual handling limits.



---

## INTUITIVE JOINT

Joint system allows for minor obstacles to be avoided without the need for 45 degree units. A radius of 13-15m (left and right) can be created by using only straight units.



---

## SECURE LID

A variety of lid fixing types are available to suit the clients security and access requirements.

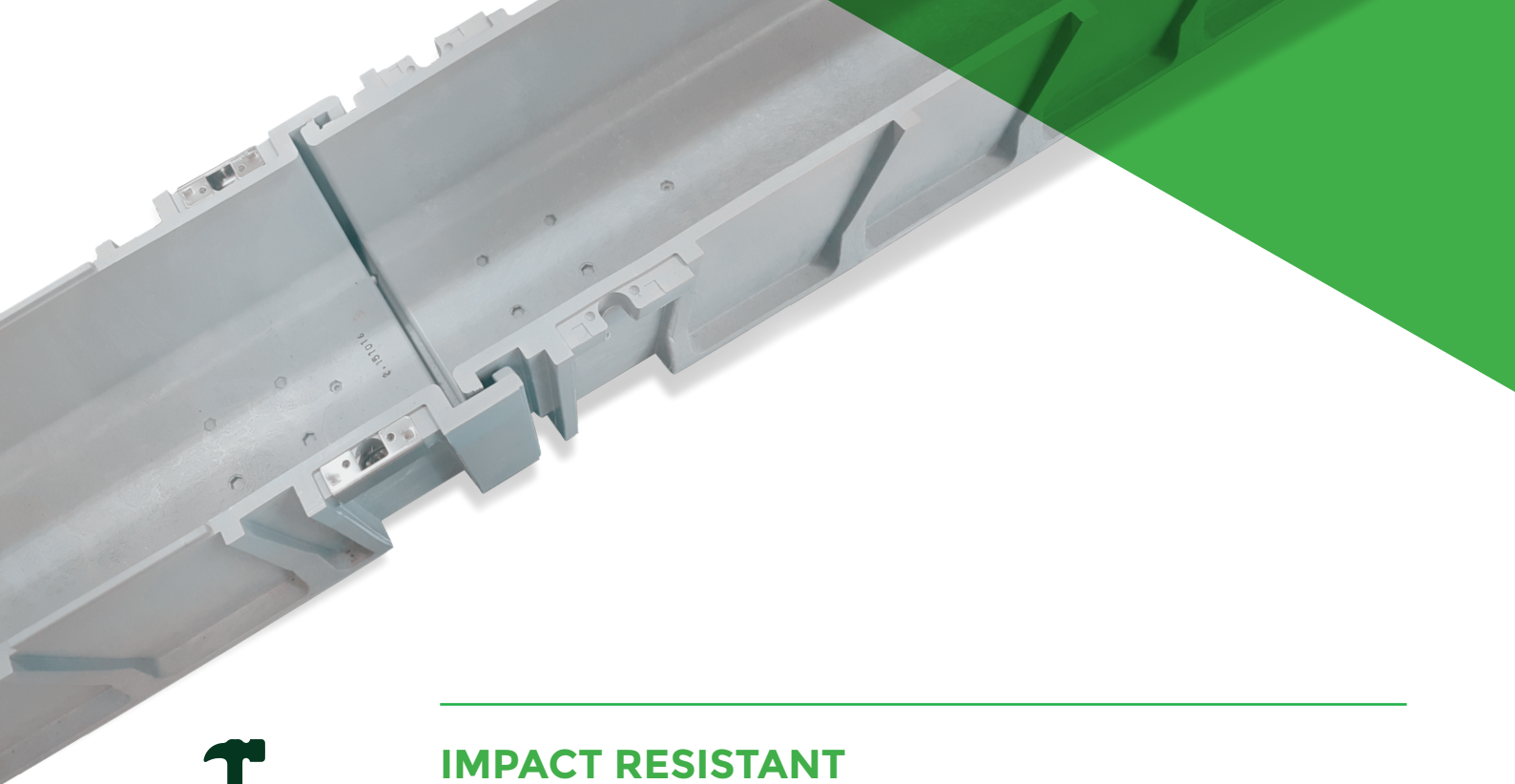


---

## LOAD BEARING

Green Trough can safely tolerate loads of 4.9kN/500mm without sustaining any visible or structural damage.





---

## IMPACT RESISTANT

Green Trough sustains only superficial damage when dropped from a height of 0.7m. It can still be used even if dropped during installation as it will not crumble like concrete alternatives.



---

## EXTREMELY DURABLE

Resistant to damage from salt and snow melting agents. Excellent weather resistance. Equivalent to 50 years in compliance with our original accelerated UV test.



---

## FLAME RESISTANT

Green Trough will self extinguish in less than 60 seconds once the flame source is removed. (Based on JESC E7003) Green Trough is also halogen free.



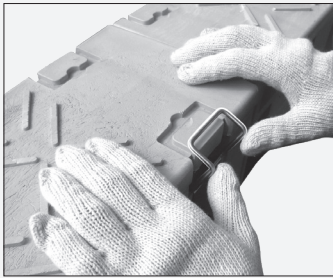
---

## PROCESSING

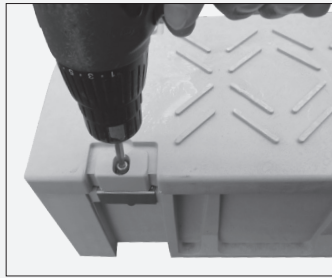
Using Green Trough can significantly reduce labour time. Units can be modified on site using basic hand tools. Overall 'installed cost' is reduced when compared with concrete alternatives.

# GREEN TROUGH PRODUCT LINE-UP

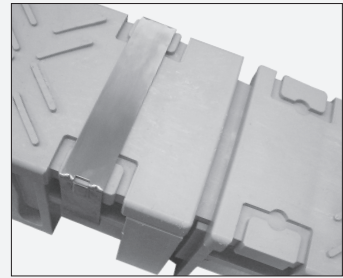
Each Green Trough series is available with a clasp, screw or band type lid fixing, to suit a variety of installations.



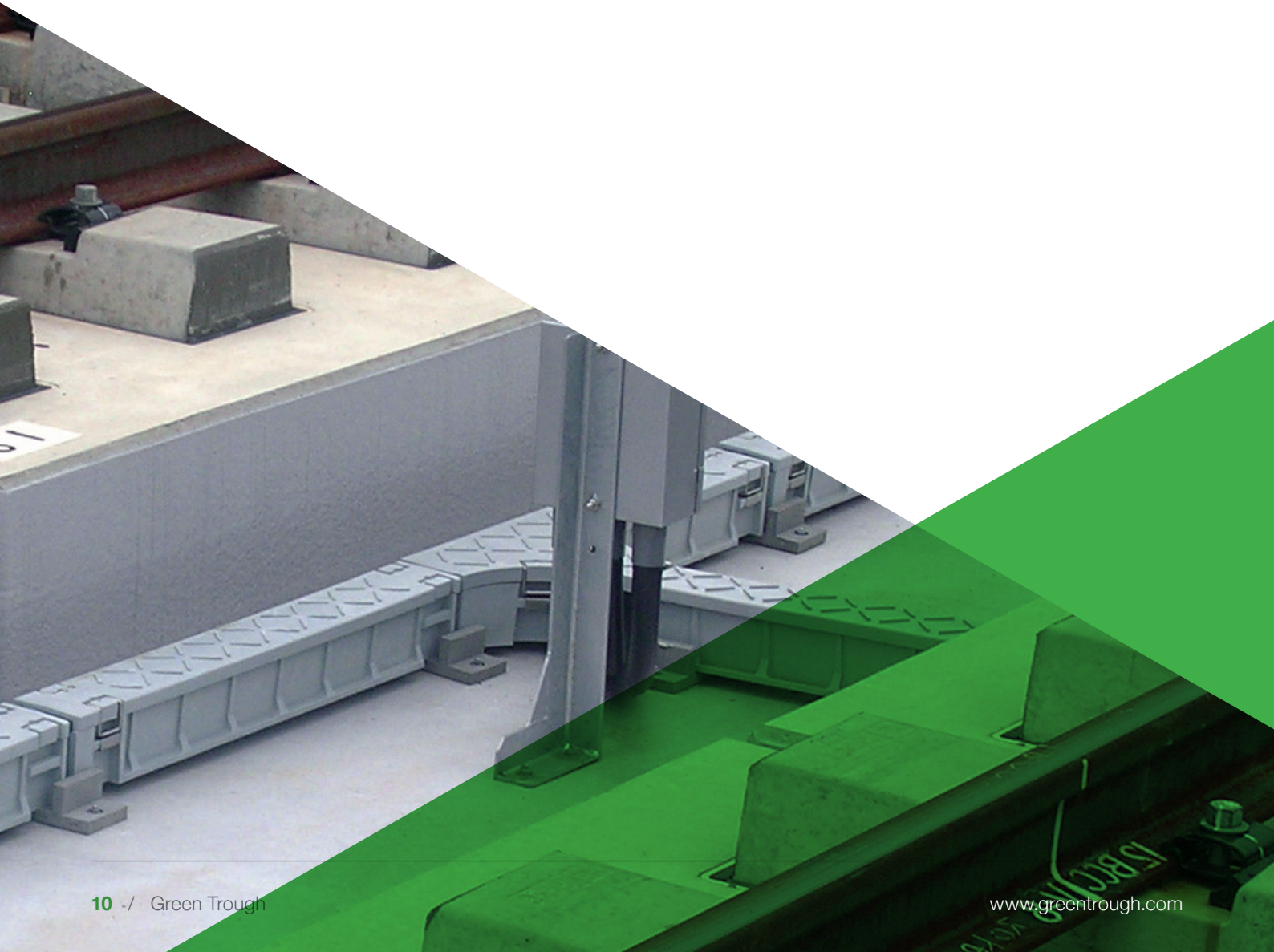
**CLASP**



**SCREW**

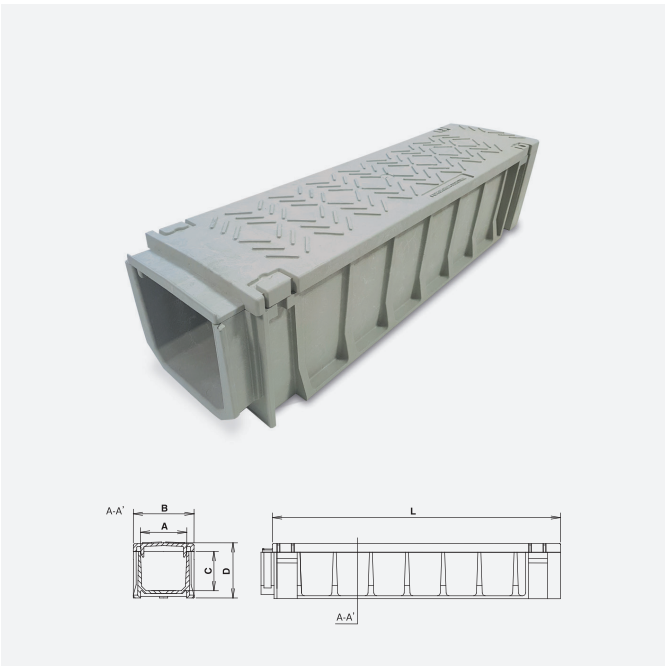


**BAND**





# STRAIGHT SERIES (STANDARD)



	mm				kg	
Size	A	B	C	D	Length	Weight
G90 series	90	120	100	136	1000	7
G135 series	135	170	125	170	1000	10
150B series	160	210	135	190	1000	13
200B series	200	270	185	255	1000	21
300B series	300	390	175	265	1000	27
430C series	450	540	255	360	500	24

# STRAIGHT SERIES (WITH DIVIDERS)



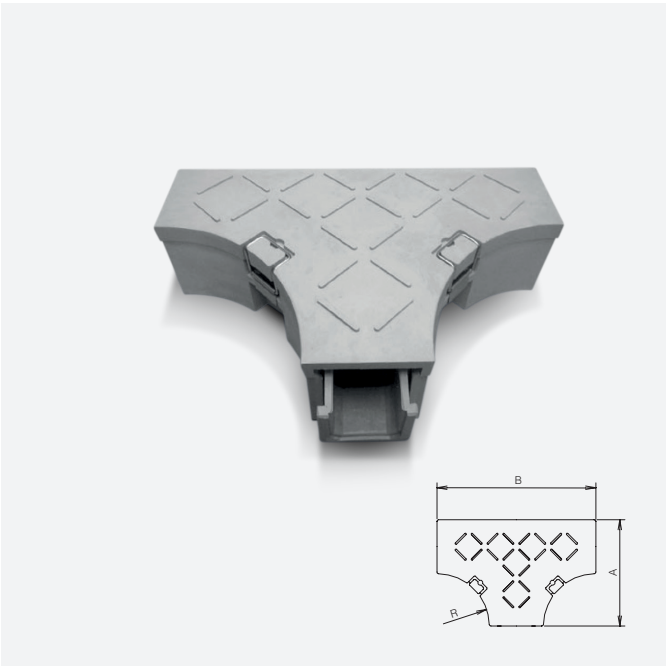
	mm				kg	
Size	A	B	C	D	Length	Weight
G135 series	135	170	125	170	1000	10
150B series	160	210	135	190	1000	13
200B series	200	270	185	255	1000	21
300B series	300	390	175	265	1000	27
430C series	450	540	255	360	500	24

# 45 DEGREE BEND SERIES



	mm		degrees	mm	kg	
Size	A	α	R	Weight	Accessory	
G90 series	120	45	350	2	Male-Male adaptor 1 set	
G135 series	170	45	350	4	Male-Male adaptor 1 set	
150B series	210	45	350	5	Male-Male adaptor 1 set	
200B series	270	45	350	8	Male-Male adaptor 1 set	
300B series	390	45	350	13	Male-Male adaptor 1 set	
430C series	540	45	350	19	Male-Male adaptor 1 set	

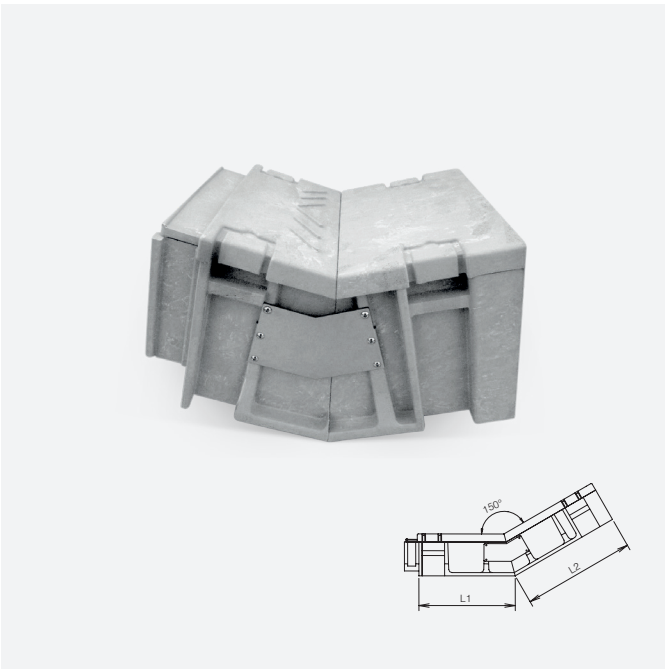
# T-JUNCTION SERIES



	mm			kg	
Size	A	B	R	Weight	Accessory
G90 series	360	600	190	6	Male-Male adaptor 1 set
G135 series	385	600	165	8	Male-Male adaptor 1 set
150B series	355	500	145	9	Male-Male adaptor 1 set
200B series	385	500	115	13	Male-Male adaptor 1 set
300B series	495	600	105	21	Male-Male adaptor 1 set
430C series	635	730	80	32	Male-Male adaptor 1 set

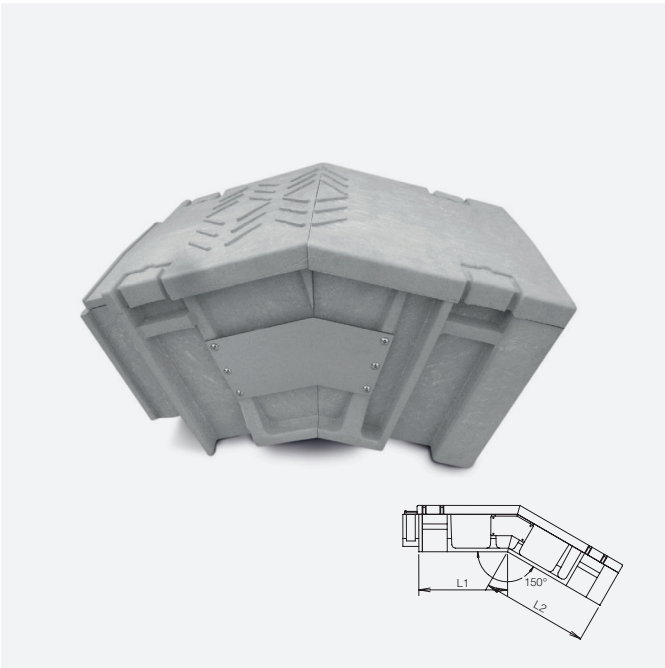


# GRADIENT SERIES (UPWARD)

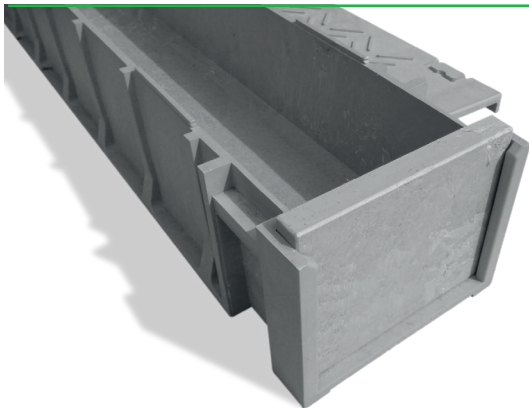


Size	mm		kg
	L1	L2	
G90 series	300	350	4
G135 series	300	350	7
150B series	300	350	8
200B series	200	250	10
300B series	200	250	13
430C series	200	250	17

# GRADIENT SERIES (DOWNWARD)

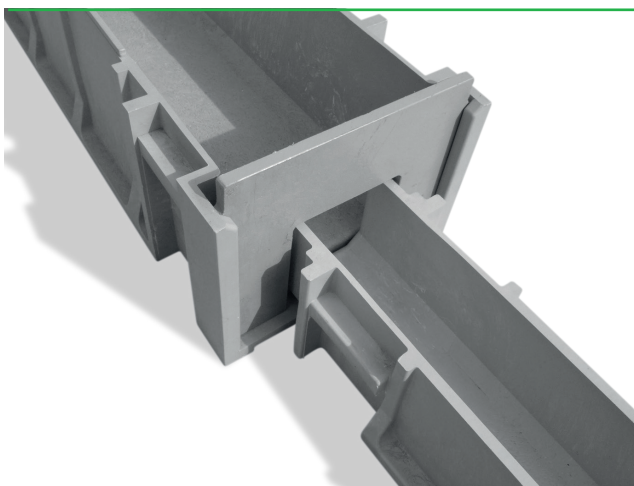


Size	mm		kg
	L1	L2	
G90 series	250	300	4
G135 series	250	300	7
150B series	250	300	8
200B series	150	200	11
300B series	150	200	14
430C series	100	150	18



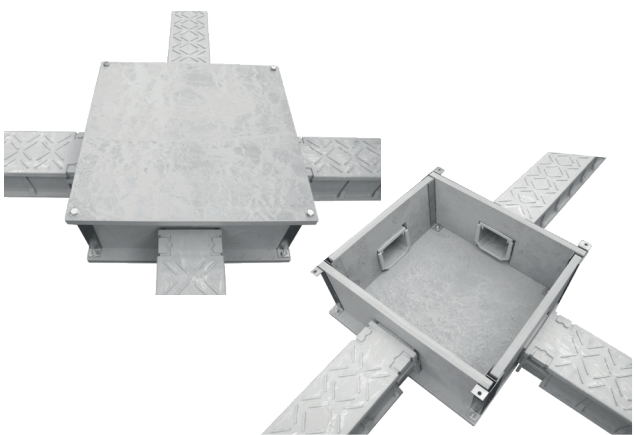
## END PLATE

For terminating the end of a trough route, to seal the open end and prevent rodent access.



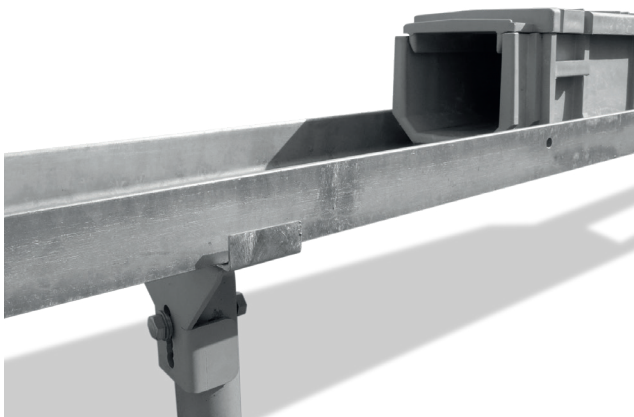
## JOINT PLATE / REDUCER

Allows Green Trough units of different sizes to be securely connected.



## JUNCTION BOX

Our lightweight junction box for cable junctions. Large internal capacity with four openings to integrate perfectly with most Green Trough sizes.



## BRIDGE FOR ELEVATED TROUGH

Available for when ground installations are not possible. We have a wide range of solutions for your installation, please contact us for more details.



**FOR SALES AND ENQUIRIES PLEASE CONTACT:**



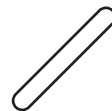
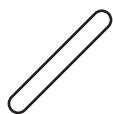
# FURUKAWA ELECTRIC EUROPE, LTD.

Furukawa House, 77-85 Fulham  
Palace Road, London W6 8JD

Before use, please view installation manual at:  
<http://www.furukawa.co.jp/recycle/english/>

Tel: +44 (0) 207 313 5307  
Fax: +44 (0) 207 313 5310  
E-mail: [greentrough@furukawa.co.uk](mailto:greentrough@furukawa.co.uk)

[www.greentrough.com](http://www.greentrough.com)  
[www.furukawa.co.uk](http://www.furukawa.co.uk)



# FURUKAWA ELECTRIC CO, LTD.

Head office: Marunouchi Nakadori Bldg., 2-3,  
Marunouchi 2-chome, Chiyoda-ku, Tokyo, Japan 100-8322

Tel: +81-3-3286-3443  
Fax: +81-3-3286-3648  
E-mail: [fec.kanro-global@furukawaelectric.com](mailto:fec.kanro-global@furukawaelectric.com)

[www.furukawa.co.jp/eflex/english](http://www.furukawa.co.jp/eflex/english)

Published Jan 2019