



46" Chart Table Monitor

DuraVision® MDF4601WT

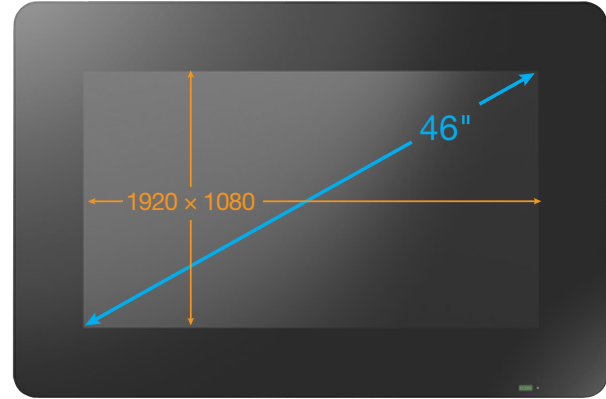


Route Planning at Your Fingertips

Innovative Touch Features

Ample Space for Efficient Operation

A large 46-inch screen provides ample space for ship operators to view important nautical information from one or more applications in a single location. Images are displayed pixel by pixel in full high definition (1920 × 1080) for precise observation.



Fully Flat Table Design

The monitor can be laid horizontally and has a fully flat surface, allowing it to double as a table for laying out traditional paper charts when they are occasionally called for. The wide outer edges of the monitor also provide a place for the crew to conveniently set items or rest their hands without obstructing the view of the screen.

Chart table stand is not included with the monitor.



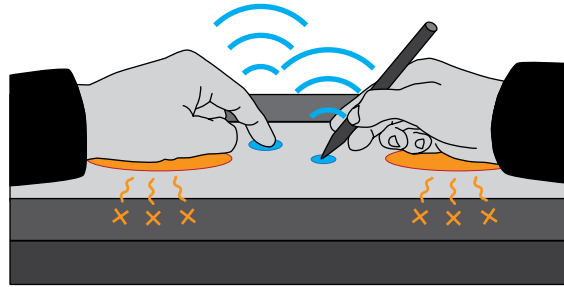
Projected Capacitive Touch Panel

The DuraVision MDF4601WT chart table monitor features projected capacitive touch technology which is more durable and reliable compared to other touch technologies. The monitor accepts touch input from a bare finger or dedicated stylus.



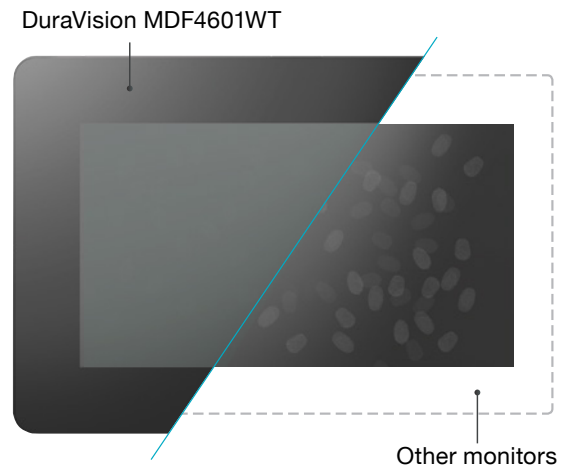
Multitouch Interface

The screen can detect up to 10 simultaneous touches so multiple people can operate the monitor at the same time. The monitor is equipped with palm rejection which allows you to rest your hand or arm directly on the screen naturally without causing any unintended touch input.



Fingerprint Resistance

The DuraVision MDF4601WT's surface is coated with a fingerprint-resistant finish that minimizes the visibility of fingerprints left on the screen from touch interaction.



Liquid Detection

To prevent unintended touch input in the case of any liquid spillage on the screen, EIZO includes a function that detects spills. Once detected, the monitor will automatically disable touch functionality and re-enable it when the spill has been cleaned.



Touch Detection Control

Users can easily turn touch detection on or off by pushing the button conveniently located on the monitor's outer rim. A button is located on two sides of the monitor for easy access.



Dedicated Stylus

EIZO's dedicated touch stylus and holder are included with the monitor.

TSA-01 does not include holder when purchased separately.

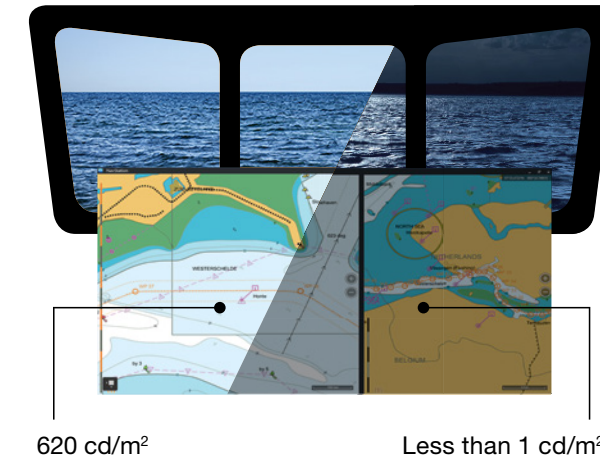


Advanced Functionality

High Visibility

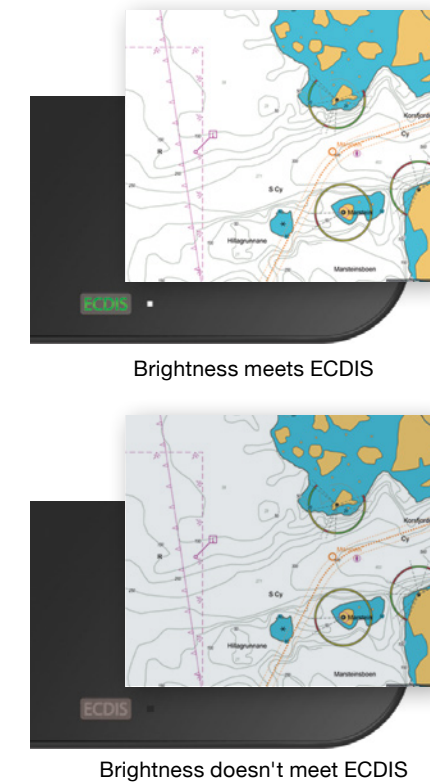
The wide dimming range of less than 1 to 620 cd/m² allows operators to adjust to the appropriate brightness level for viewing during the day or at night, providing optimal visibility.

ECDIS-certified dimming: 400 cd/m².



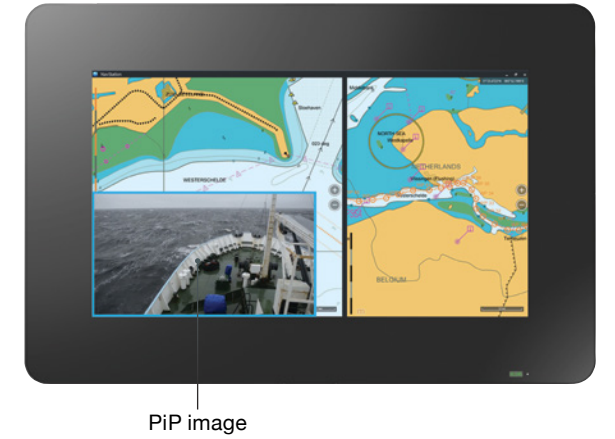
ECDIS Indicator

The ECDIS indicator located on the front of the monitor is lit when the brightness and color settings correctly meet the requirements for ECDIS. In the event the monitor's settings are adjusted such that the brightness is no longer supporting ECDIS standards, the light will automatically turn off.



Picture-in-Picture

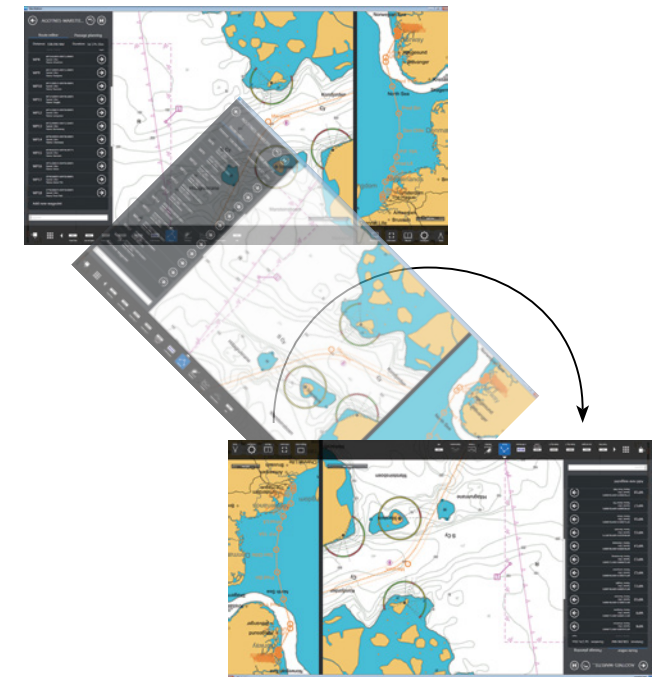
Picture-in-Picture (PiP) functionality allows operators to display a small separate screen from a second signal source within the monitor to effectively view multiple windows containing navigational information.



EIZO Screen Rotator

EIZO Screen Rotator is a free software application that allows you to quickly rotate the image on the monitor by 180° with a single touch. This is helpful when multiple members of the crew are viewing the screen from opposite sides of the chart table.

Supported by Windows OS only.



Durability and Reliability

Calibrated for ECDIS

Backlight brightness, gamma, and RGB color settings are calibrated at the factory so the monitor achieves accurate color reproduction for meeting the highly specialized requirements of ECDIS systems. The monitor meets IEC 61174, IEC 62288, and IEC 62388 international standards for ECDIS and RADAR applications.

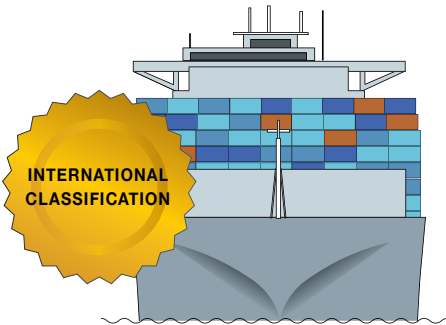
Formal approval dates for international standards may vary. Contact EIZO for date of compliance for IEC 61174.



Approval from Maritime Classifications

The monitor meets the requirements for major maritime classifications with approvals for LR (UK), DNV GL (Norway/Germany), ABS (USA), and NK (Japan).

Formal approval dates for classifications may vary.



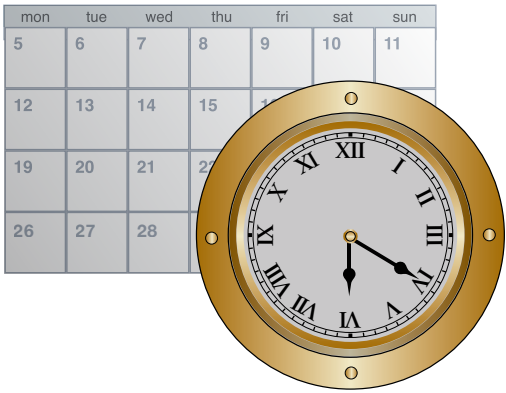
Protection

The monitor offers durability for use in harsh maritime environments, complying with the conditions for temperature, humidity, and vibration as defined in the IEC 60945 international standard for maritime navigation and radio communication equipment and systems. An IP65 rating for the front of the monitor ensures it can withstand dust ingress and is protected against low-pressure water jets.



Long-Term Reliability

The DuraVision MDF4601WT is built for 24-hour use and is backed by a 3-year manufacturer's warranty for long-term reliability.



Monitor Control

The DuraVision MDF4601WT is equipped with a wide range of communication interfaces for remote monitor control such as brightness adjustment or powering the monitor on and off — RS232C, USB, RS485, RJ45 (Ethernet), and specialized port (Extended Keyboard).



Multiple Power Inputs

In order to meet the needs of different installation environments, multiple power inputs are equipped allowing you to power the monitor using either DC or AC connectors.

Specifications

Model Variation		Without Stand
Cabinet Color		Black
Panel	Type	VA
	Backlight	LED
	Size	46" / 116.8 cm
	Native Resolution	1920 × 1080 (16:9 aspect ratio)
	Viewable Image Size (H × V)	1018.1 × 572.7
	Pixel Pitch	0.530 × 0.530 mm (minimum viewing distance: 1.824 m)
	Grayscale Tones	256 tones
	Display Colors	16.77 million
	Viewing Angles (H / V, typical)	178°, 178°
	Brightness (typical)	620 cd/m ² (ECDIS-certified dimming: 400 cd/m ²)
Touch Panel	Contrast Ratio (typical)	4000:1
	Response Time (typical)	6.5 ms (gray-to-gray)
	Type	Projected Capacitive
	Communication Protocol	USB
	Touch Life	50 million touches (minimum)
Video Signals	Surface Hardness	5H
	Compatible OS	Windows 10 (32-bit, 64-bit) Windows 8.1 (32-bit, 64-bit) Windows 7 (32-bit, 64-bit)
	Input Terminals	DVI-I 29 pin × 1, DVI-D 24-pin × 1, VGA HD-D-Sub 15 pin × 1, CVBS (BNC) × 1
	Digital Scanning Frequency (H / V)	31 – 68 kHz, 59 – 61 Hz (VGA Text: 69 – 71 Hz)
	Analog Scanning Frequency (H / V)	31 – 80 kHz, 56 – 76 Hz
USB	Sync Formats	Separate, Composite
	Video Input Format	NTSC, PAL, SECAM
	Function	1 port for touch panel control and communication
	Standard	USB 2.0
Power	Power Requirements	AC 100 – 240 V, 50 / 60 Hz DC 24 V
	Maximum Power Consumption	AC 125 W DC 121 W
	Power Save Mode	17 W or less (AC input) 13 W or less (DC input)
	Standby Mode	5 W or less (AC Input) 2.5 W or less (DC input)
	Power Management	Power Save (VESA DPM and DVI DMPM)
Features and Functions	Preset Modes	Color Mode (Custom, Day, Dusk, Night)
	OSD Languages	English, German, Spanish, French
	Communication Protocol	Modbus, SNMP, EIZO proprietary
	Communication Interface	RS232, RS485, USB, Ethernet, ext. Keyboard
Physical Specifications	Dimensions (W × H × D)	1,336 × 890 × 91 mm
	Net Weight	47.2 kg / 104.1 lbs
Safe Distance of Nautical Equipment from Compasses	Standard Compass	2.95 m
	Steering Compass	1.95 m
Environmental Requirements	Operating Temperature	-15 – 55 C°
	Operating Humidity (R.H., non condensing)	10 – 90%
	Storage Temperature	-20 – 60 C°
Certifications & Standards	Degree of Protection	IP65 (front) IP22 (rear)
Supplied Accessories		Setup manual, CD-ROM, cleaning cloth, stylus (touch pen), batteries for stylus, stylus holder, rubber tip for stylus
Warranty		3 years

*Chart table stand is not included with the monitor.
Formal approval dates for international standards and classifications may vary.
Contact EIZO for date of compliance for IEC 61174.*

EIZO Corporation

153 Shimokashiwano, Hakusan, Ishikawa 924-8566 Japan

Phone: +81-76-277-6792 Fax: +81-76-277-6793

www.eizoglobal.com

All product names and logos are trademarks or registered trademarks of their respective companies.
DuraVision and EIZO are registered trademarks of EIZO Corporation.
Screen images provided by NAVTOR.
Specifications are subject to change without notice.

Copyright © 2017 EIZO Corporation. All rights reserved.