

## NPD2118

### 21.5" IP65 Sunlight Readable Marine Display

NAVPIXEL NPD2118, the high-performance, rugged monitor, is specially engineered to survive from the most demanding working environment. Housed in a milled billet aluminum case, the slim-profile NAVPIXEL NPD2118 is light weight and watertight. The front-mounted sunlight readable screen makes the industrial rugged monitor vividly and user-friendly. In addition, the high power efficiency and low heat design guarantee the stability and longevity required for mission critical deployment.

#### Features

- 1600 nits Sunlight Readable LCD
- Long Life, Low Power Consumption LED Backlight
- Wide Operating Temperature
- Picture In Picture Function
- Advanced Optical Bonding (AOT)
- High Shock & Vibration Resistance
- IP65 Facial Waterproof
- Isolation Power 9-36V DC Input

#### Application

- Marine



### Specifications

V1

<b>Model Number</b>	<b>NPD2118</b>
<b>Description</b>	<b>21.5" IP65 Sunlight Readable Marine Display</b>
<b>Backlight</b>	LED Backlight
<b>Active Display Area</b>	477.7 x 269.1mm
<b>Brightness</b>	1600 cd/m <sup>2</sup>
<b>Resolution</b>	1920x1080 (FHD)
<b>Contrast Ratio</b>	1100:1
<b>Pixel Pitch (mm)</b>	0.248(H) x 0.248 (V)
<b>Viewing Angle</b>	170 (H), 160(V)
<b>Display Color</b>	16.7M
<b>Response Time</b>	5ms
<b>Inputs</b>	VGaX2, DVlX2, Compositex3, RS232x1, USBx1
<b>PIP Support</b>	3 Stages (child, split & wide screen)
<b>Mechanical</b>	
<b>IP Rating</b>	Facial waterproof to IP65 standards when console mounted.
<b>Construction</b>	Rugged Aluminum Alloy Chassis
<b>Mounting</b>	Panel (Flush) mount, VESA mount
<b>Dimension (mm)</b>	557.6(W) x 383.2(H) x 56.9(D)
<b>Net Weight</b>	6kg
<b>Power</b>	
<b>Voltage</b>	DC Input Voltage: DC 9~36V
<b>Power Consumption</b>	47W
<b>Environmental</b>	
<b>Operating Temperature</b>	-10°C~50°C
<b>Non-Operating Temperature</b>	-20°C~70°C
<b>Certification</b>	Designed to meet CE / FCC Class A
<b>Marine Type Approval</b>	Designed to meet CE/FCC & BV Marine Approval Pending

Specifications are subject to change without notice.

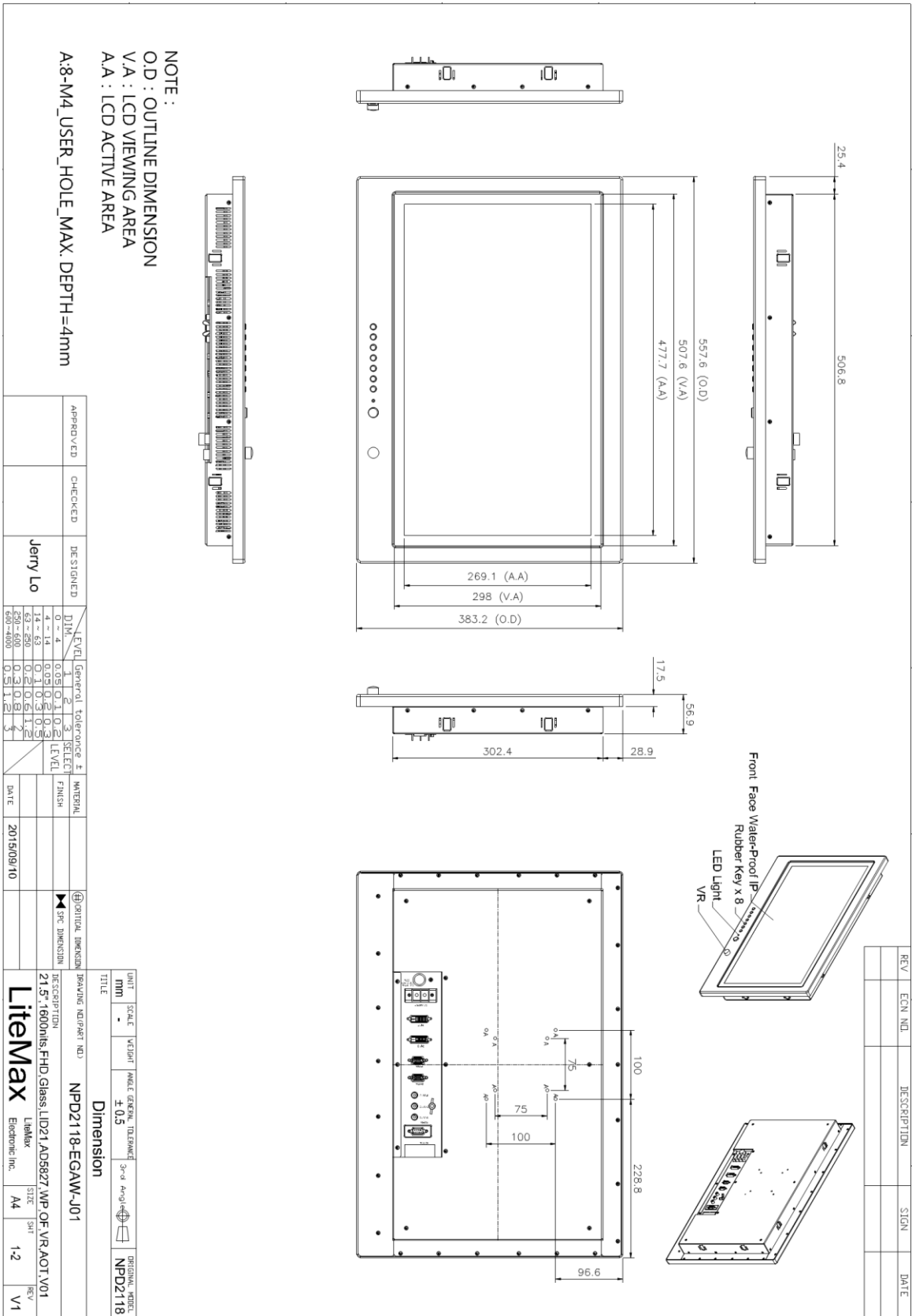
All brands or product names are trademarks or registered trademarks of their respective companies.



# Mechanical Drawing

## Outline Dimensions

Unit:mm







## Ordering Information

Part Number	Description
NPD2118-EGAW-J01	21.5",1600nits,FHD,Glass.LID21,AD5827,WP,O/F,VR,AOT.V01
NPD2118-EGAW-J011	21.5",1600nits,FHD,Glass.LID21,AD5827,WP,O/F,VR,AOT.with adaptor,V01

## Optional Accessories

Part Number	Description
810650005110	CABLE,POWER,DC,5000mm,TER.MINAL TO OPEN,14AWG*2C+BRA.ID,COOL GRAY 7C PVC JACKET,P
810130001000	CABLE.VGA.3000mm.D-SUB15P MALE.BLUE TO D-SUB 15P MALE BLUE.BLACK.P
321189155501	Print,Menu,User,NPD.1555,V0,series,P
321179211801	Print,Menu,Install,NPD,2118,V0.Flush mount template,P
112615315401 x (4)	Metal,SPCC,NPS,1531,Lock,V0,P
214032121101 x (4)	Screw,M4,32mm,Round,Ni,P
460100002101 x (4)	Fixture,other,MP-4,V0,P
980000560010 (Optional)	SET,OTHER,ADAPTER REWORK.60W KPA-060F WITH Y TYPE.TERMINAL,P
810618301010 (Optional)	CABLE.POWER.AC.1830mm USA type
810618301090 (Optional)	CABLE,POWER,AC,1830mm Europe type
810618301050 (Optional)	CABLE.POWER.AC.1830mm UK type
810618301170 (Optional)	CABLE.POWER,AC,1830mm Australia type
810618301031 (Optional)	CABLE.POWER.AC.1830mm Japan type